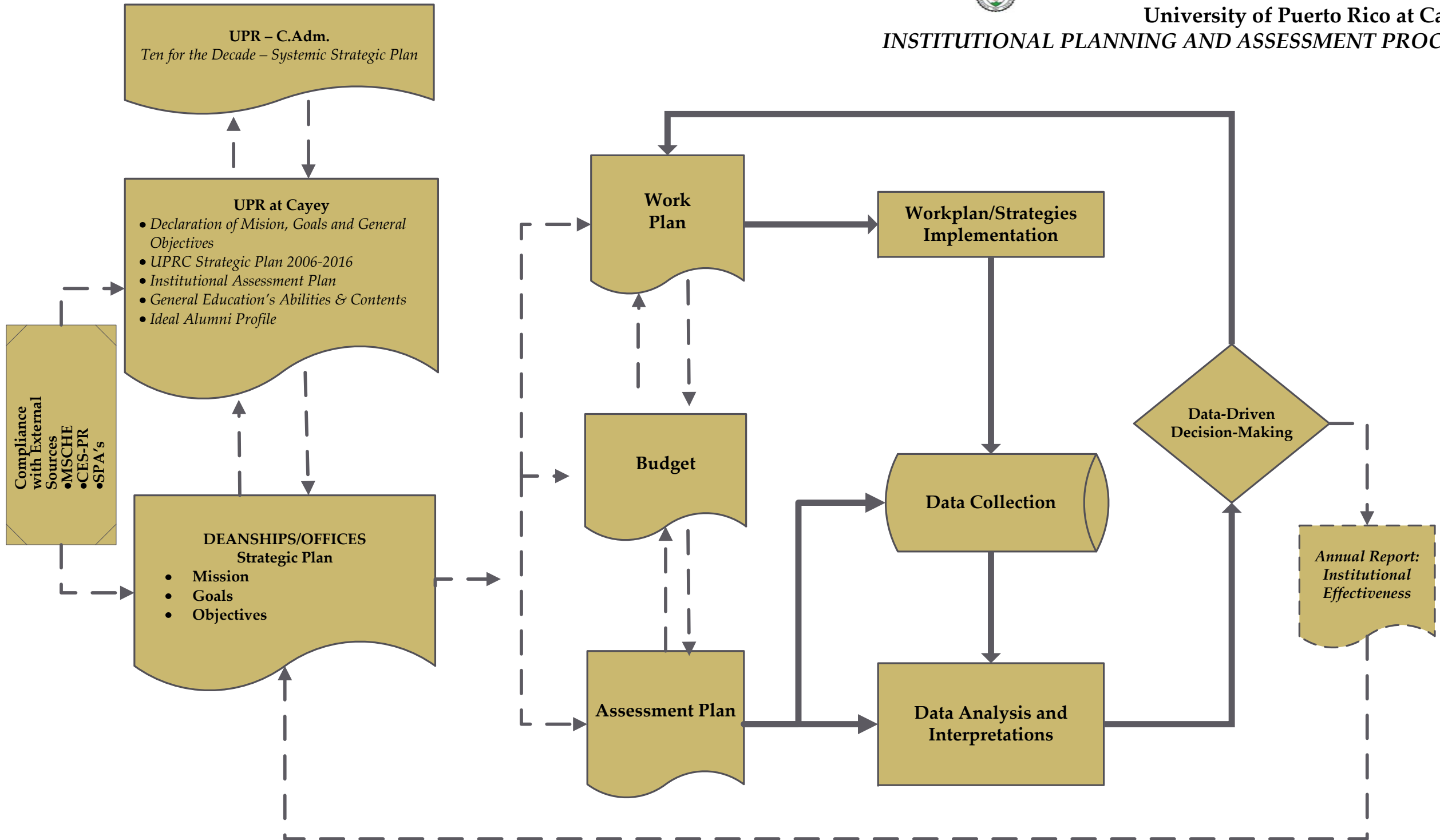




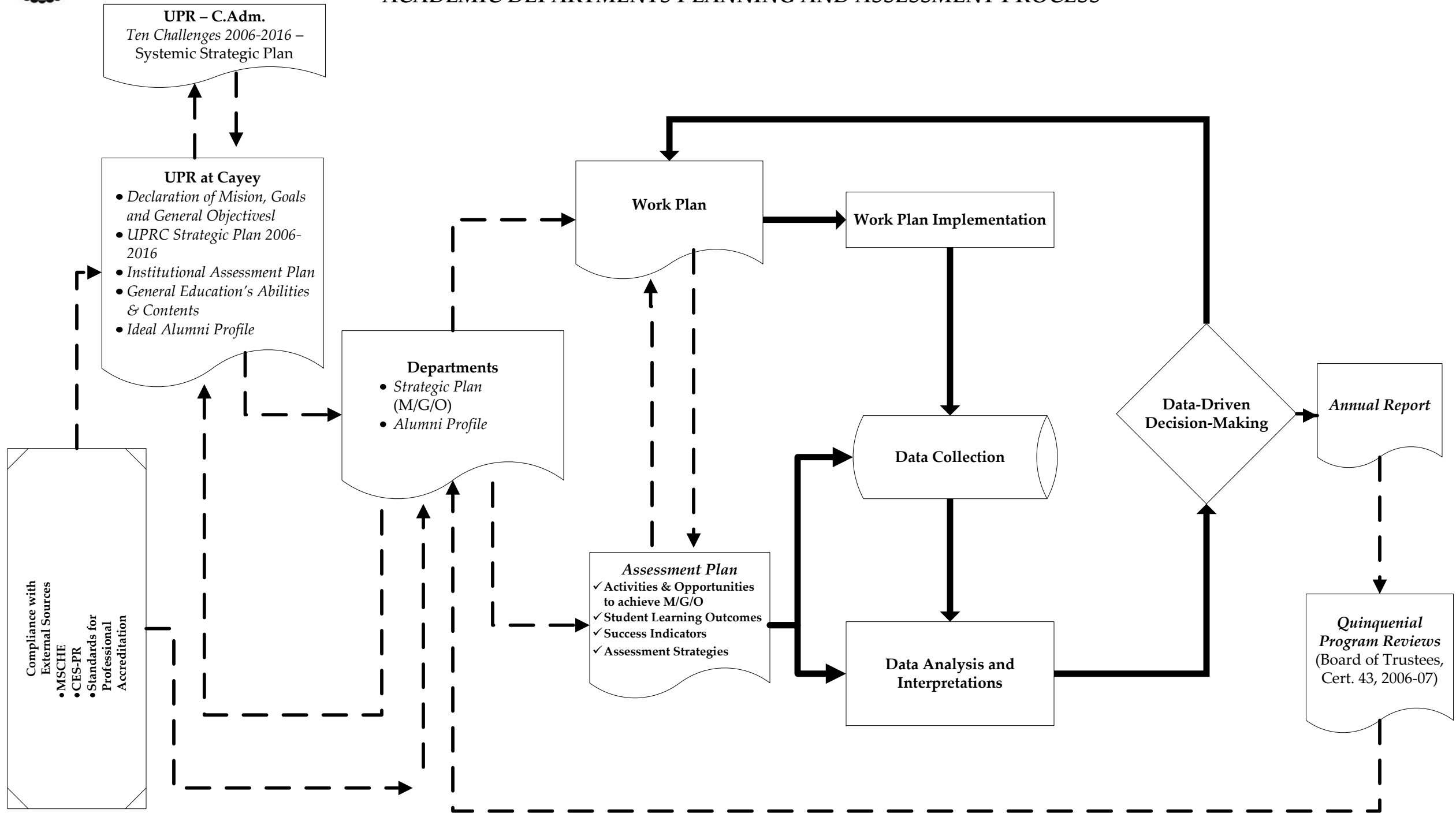
Institutional Assessment Roadmap: Graphical Guides for Implementing Institutional and Student Learning Assessment

Prof. Irmannette Torres-Lugo
Assessment & Institutional Research Office (AIRO)
December 2010



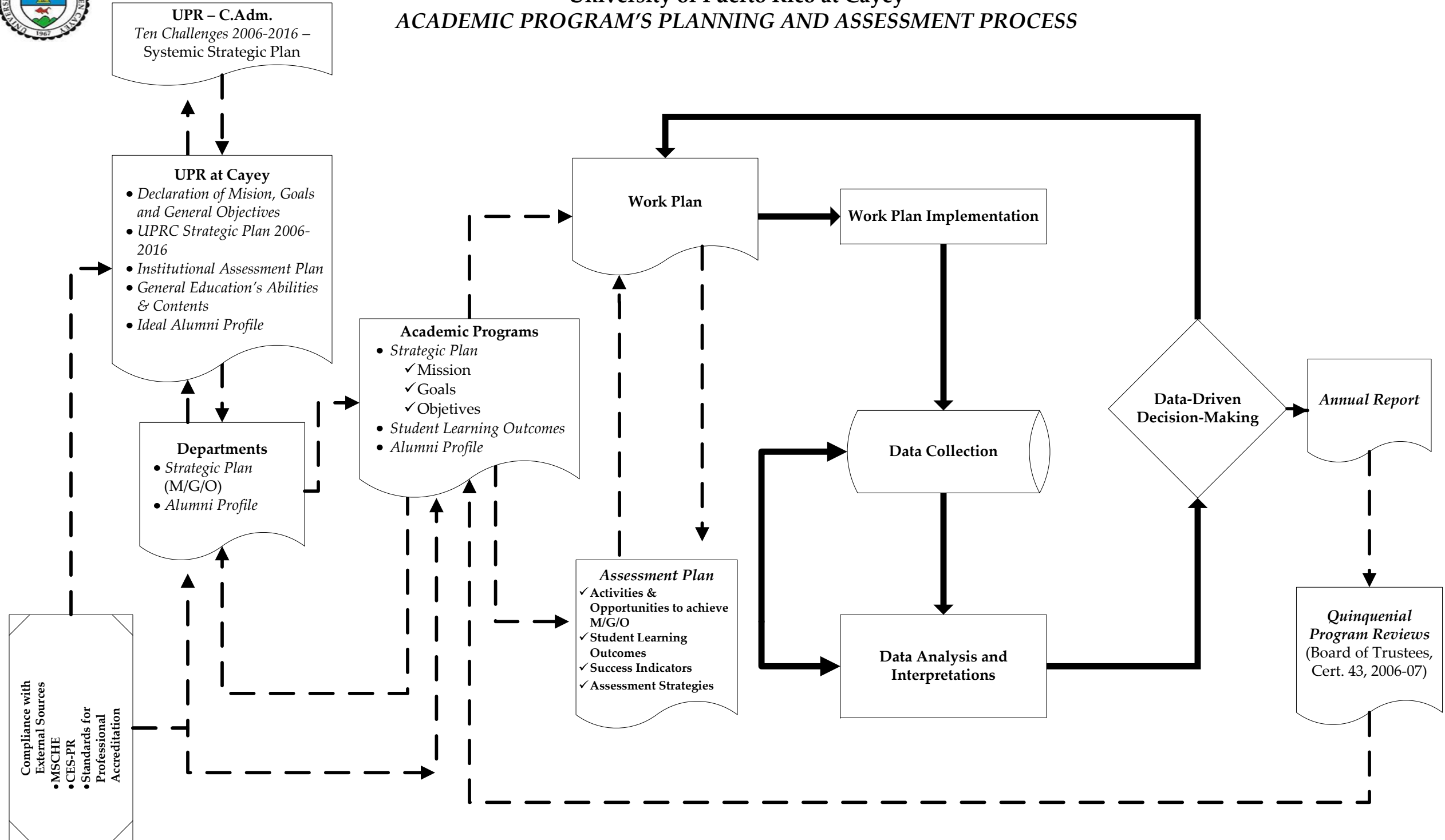


Assessment & Institutional Research Office
University of Puerto Rico at Cayey
ACADEMIC DEPARTMENTS PLANNING AND ASSESSMENT PROCESS





Assessment & Institutional Research Office
University of Puerto Rico at Cayey
ACADEMIC PROGRAM'S PLANNING AND ASSESSMENT PROCESS

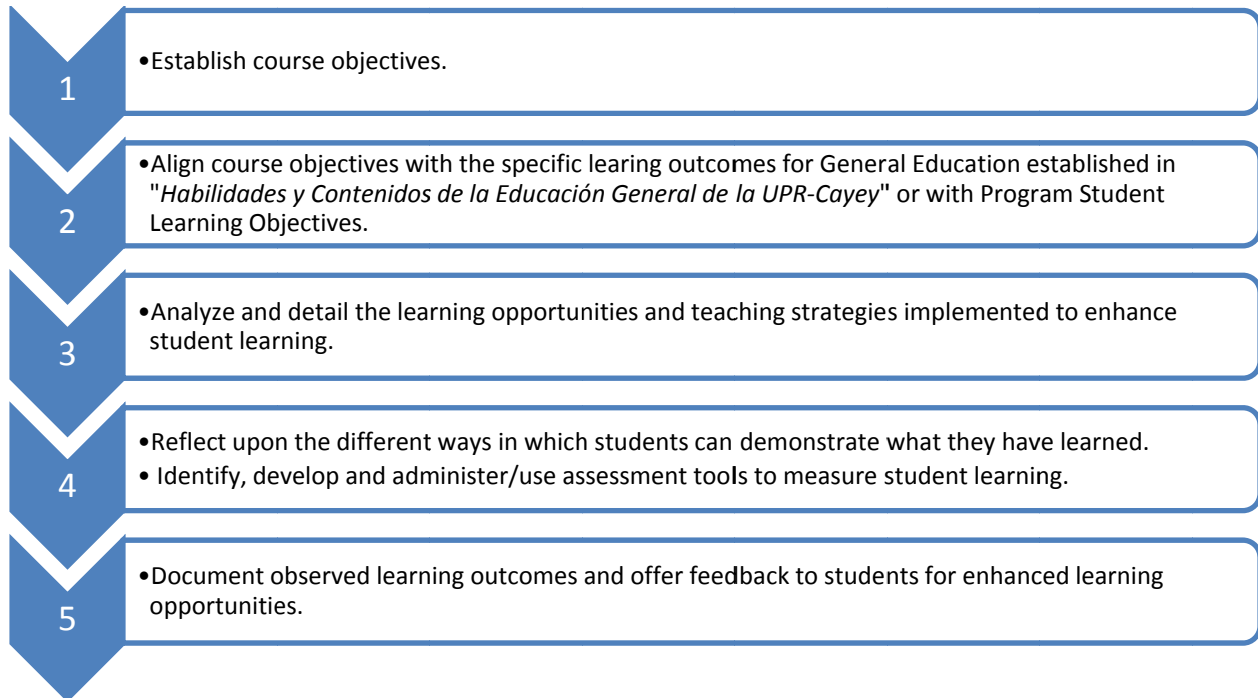




Assessment and Institutional Research Office
University of Puerto Rico at Cayey

General Guidelines for Student Learning and Course Assessment for Curricular Renewal

Phase I – Course Embedded Student Learning Assessment



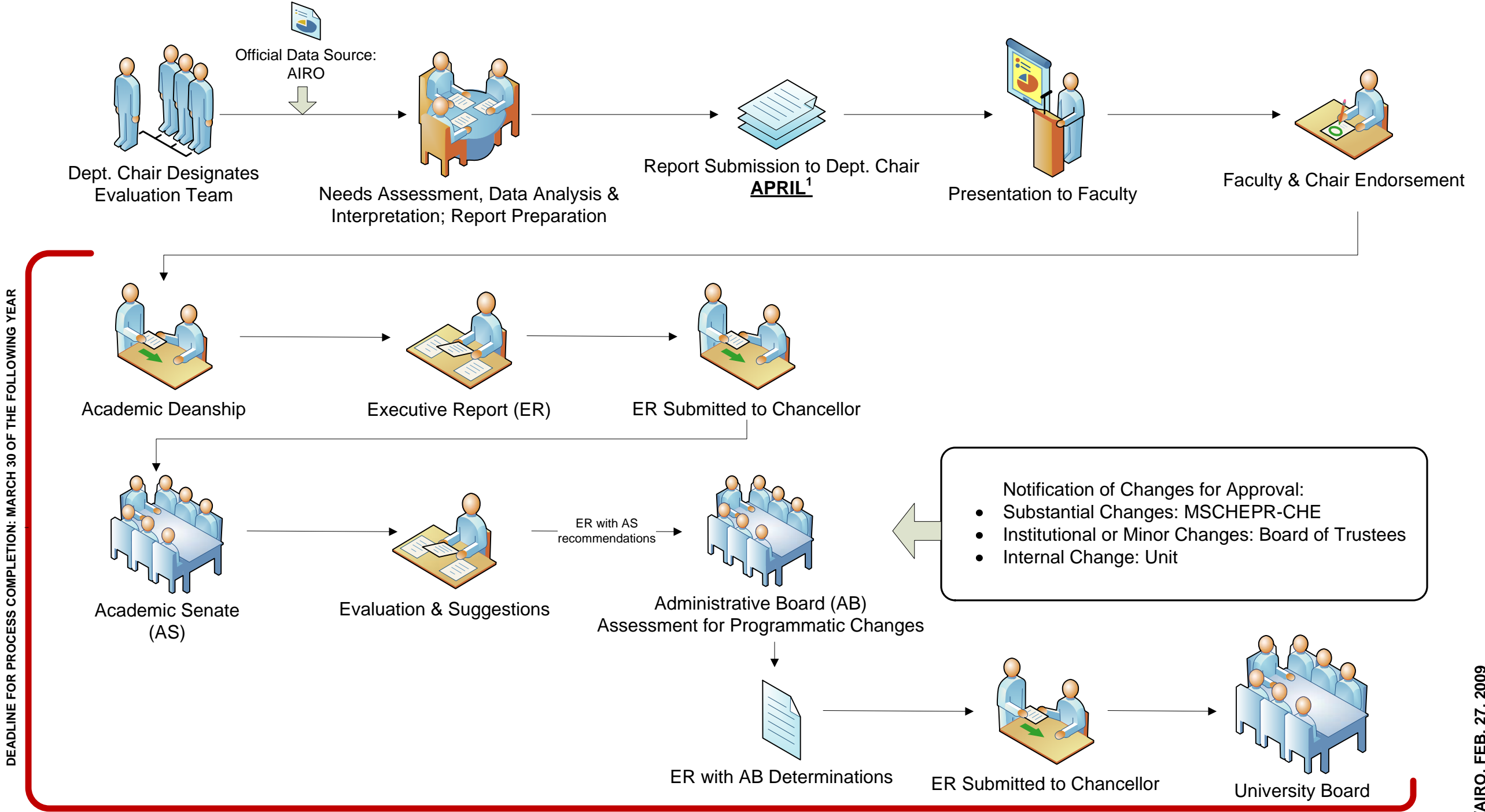


Assessment and Institutional Research Office
University of Puerto Rico at Cayey

Phase II – Course Assessment for Curricular Renewal

- 1 • Reflect upon what where the possible underlying factors impacting student learning (i.e., HYPOTHESIS).
- 2 • Reflect upon the strengths and areas for improvement of the implemented instructional strategies.
- 3 • Reflect upon the achievements and areas for improvement in student learning.
- 4 • Reflect upon changes and strategies to be implemented the next time the course is offered.
- 5 • Identify actions to be taken at the programmatic and departmental level in order to address the challenges students present upon course completion.
- 6 • Implement decisions.

Quinquennial Programmatic Review Transmittal Process – Board of Trustees’ Certification 43 (2006-2007)



1. Report to be submitted in April of the Academic Year in which the program is to complete their Program Review in accordance with the *Decennial Evaluation Calendar*.